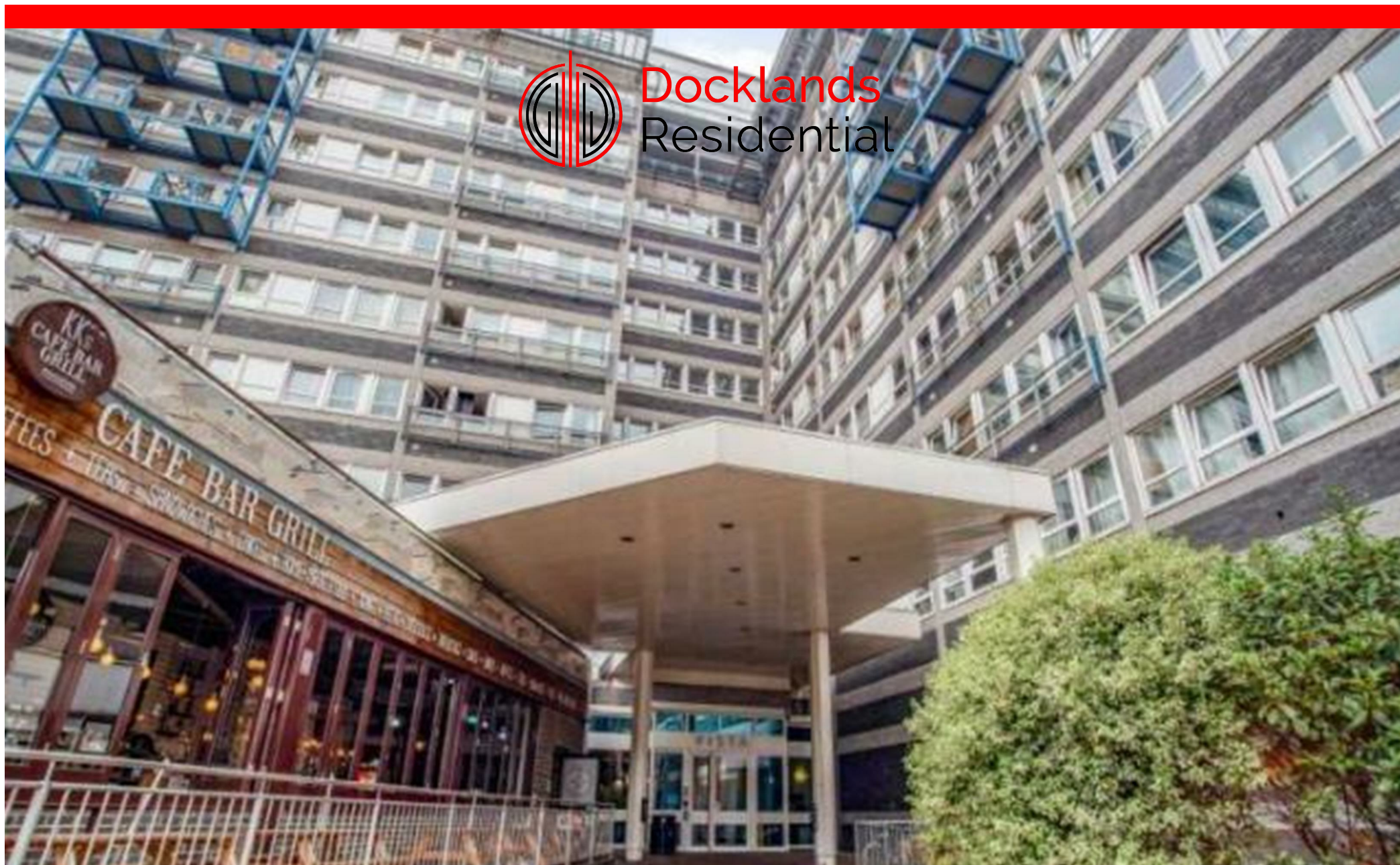




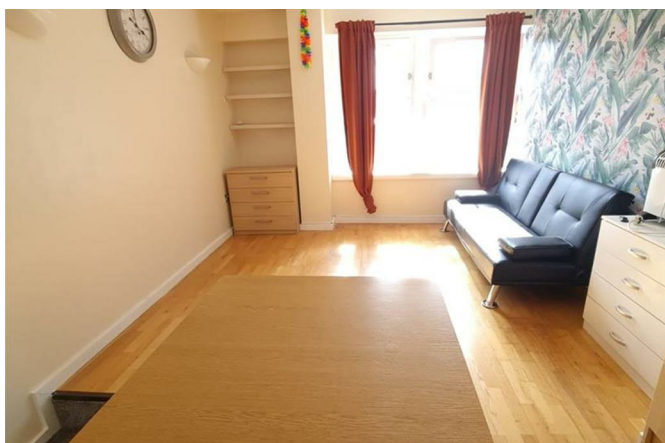
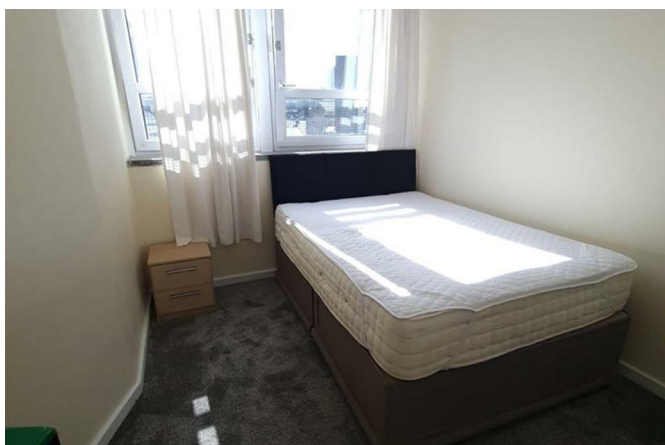
**Docklands**  
Residential



**Vista Building, 322 Calderwood Street, London, SE18 6JF**

**£225,000**





## Vista Building, 322 Calderwood Street, London, SE18 6JF

**£225,000**

CASH BUYER

- One Bedroom Apartment
- One Bathrooms

Docklands Residential are pleased to market this spacious one bedroom one bathroom apartment situated in the heart of Woolwich. Based on the 3rd floor, the property comprises on an open plan reception room with a nicely fitted kitchen, well proportioned bedroom and a modern bathroom. The development offers a concierge service, great transport links from Woolwich mainline and superb local amenities.

## Description



## Situation

null

Council Tax Band:

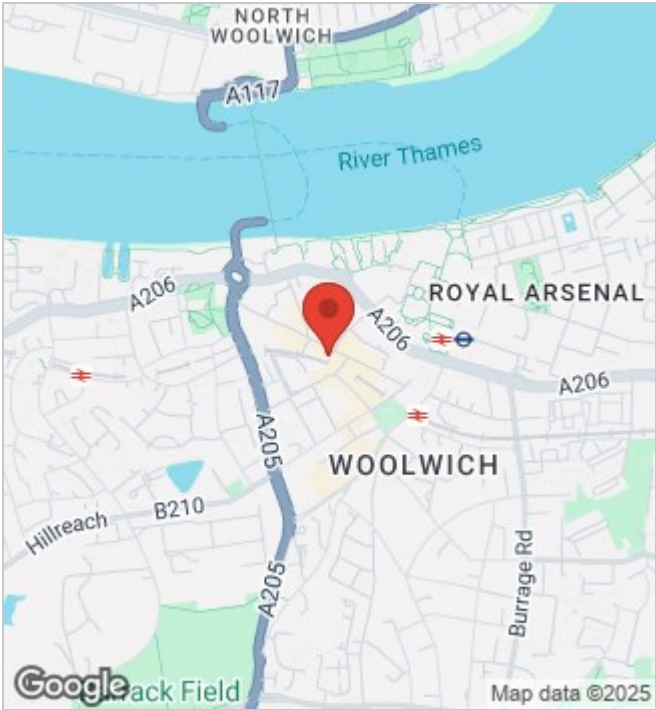
Available:



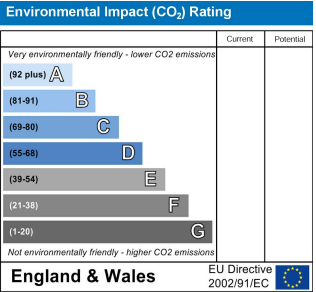
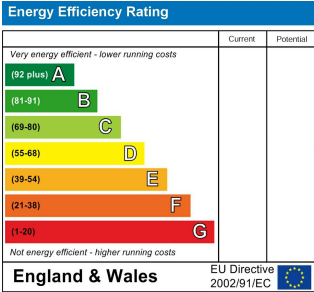
Floor Plans



Area Map



Energy Performance Graph



These particulars, whilst believed to be accurate are set out as a general outline only for guidance and do not constitute any part of an offer or contract. Intending purchasers should not rely on them as statements of representation of fact, but must satisfy themselves by inspection or otherwise as to their accuracy. No person in this firms employment has the authority to make or give any representation or warranty in respect of the property.